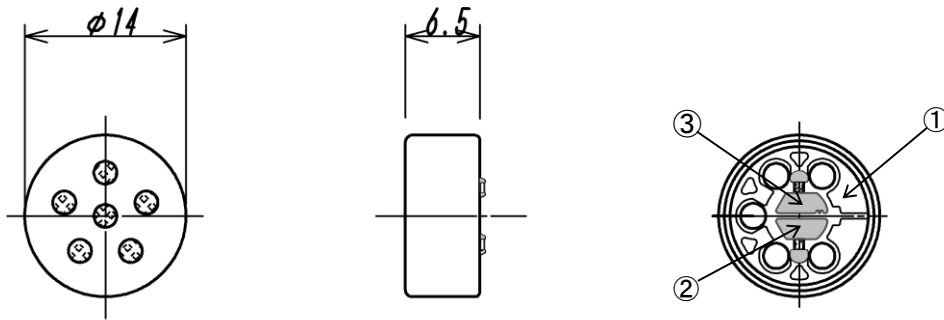
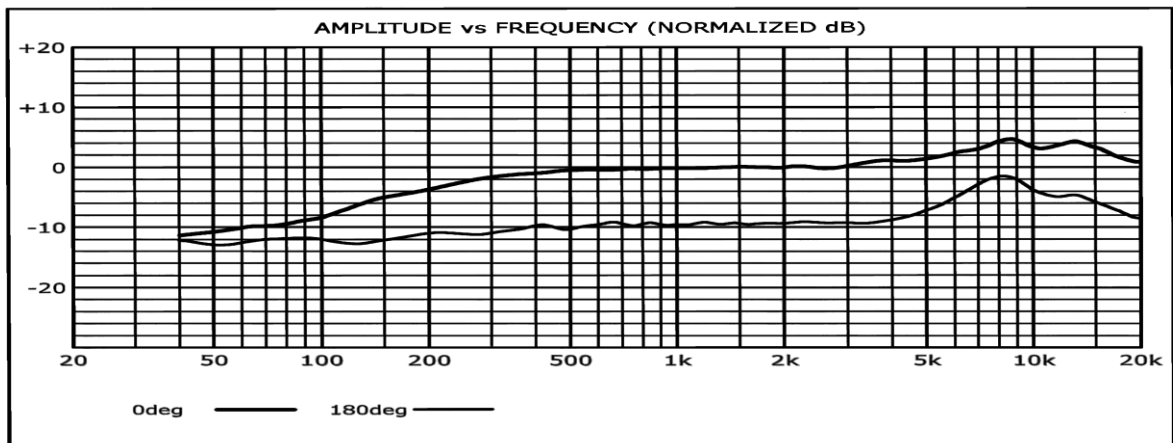


1. Outer Appearance and Dimensions (unit : mm)

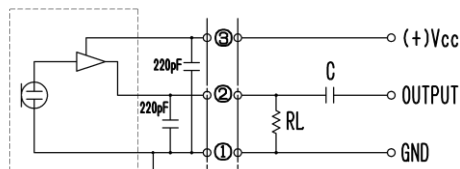


2. Electrical Specifications

- 2-1 Type Back Electret Condenser
- 2-2 Sensitivity $-41\text{dB} \pm 3\text{dB}$ ($0\text{dB} = 1\text{V} / 1\text{Pa}$)
- 2-3 Frequency Range $50\text{Hz} \sim 20\text{kHz}$
- 2-4 Impedance $1\text{k}\Omega$ typical at 1kHz ($R_L = 2.2\text{k}\Omega$)
- 2-5 Polar Pattern Uni-Directional ($180^\circ - 10\text{dB} \pm 3\text{dB}$)
- 2-6 Power Requirements 1. $3\text{V} \sim 12\text{V}$ Operating Voltage Reference 3V
- 2-7 Current Consumption less than $300\mu\text{A}$
- 2-8 Maximum Input S. P. L 114dB S. P. L (DC 3V $R_L = 2.2\text{k}\Omega$ at 1kHz 1% THD)
 130dB S. P. L (DC 3V $R_L = 10\text{k}\Omega$ at 1kHz 1% THD)
- 2-9 Signal/Noise Ratio Greater than 66dB (at $1\text{kHz}/\text{Pa}$ A-Weighted)
- 2-10 Polarity Positive acoustic Pressure on the diaphragm
Generates a positive phase voltage on OUTPUT
- 2-11 Frequency Response



Measurement Circuit



RevNo.	Date	Revision note			
			Four-Leaf		