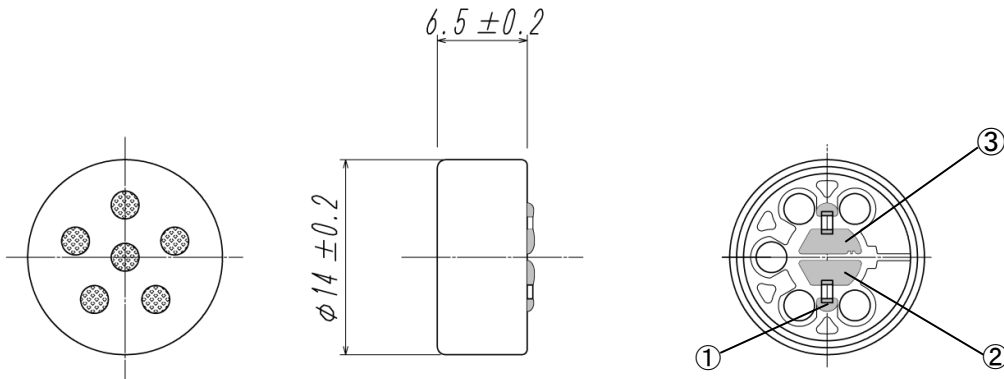
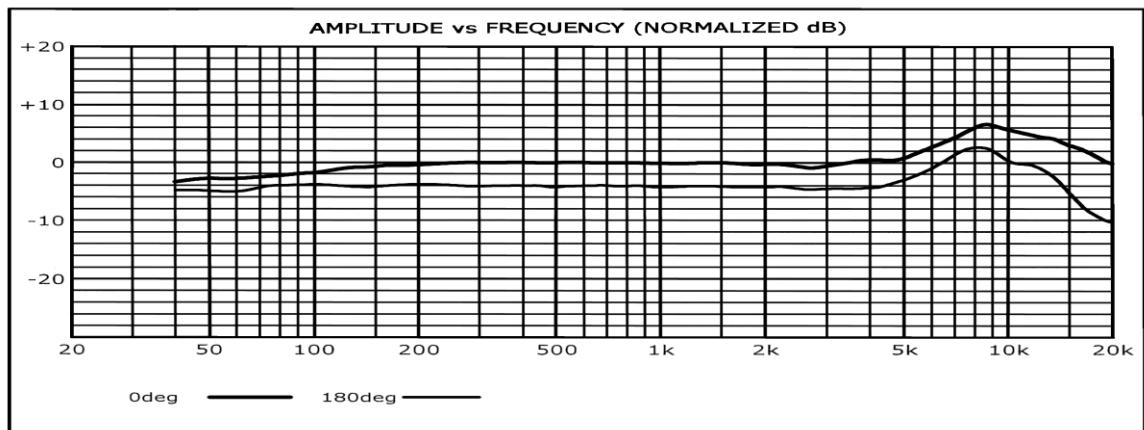


1. Outer Appearance and Dimensions (unit : mm)

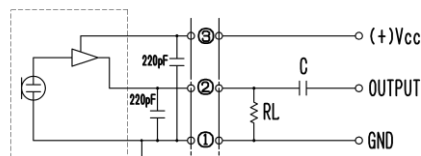


2. Electrical Specifications

- 2-1 Type Back Electret Condenser
- 2-2 Sensitivity $-45\text{dB} \pm 3\text{dB}$ (0dB = 1V / 1Pa)
- 2-3 Frequency Range 50Hz ~ 20kHz
- 2-4 Impedance Smaller than $1\text{k}\Omega$ at 1kHz (RL = 2.2k Ω)
- 2-5 Polar Pattern Uni-Directional ($180^\circ = -5\text{dB} \pm 2\text{dB}$ at 1kHz)
- 2-6 Power Requirements 1. 3V ~ 12V Operating Voltage Reference 3V
- 2-7 Current Consumption Less than 300 μA
- 2-8 Maximum Input S. P. L 114dB S. P. L (DC 3V RL=2.2k Ω at 1kHz 1% THD)
130dB S. P. L (DC 3V RL=10k Ω at 1kHz 1% THD)
- 2-9 Signal/Noise Ratio Greater than 66dB (at 1kHz/Pa A-Weighted)
- 2-10 Polarity Positive acoustic Pressure on the diaphragm
Generates a positive phase voltage on OUTPUT
- 2-11 Frequency Response



Measurement Circuit



RevNo.	Date	Revision note			
			Four-Leaf		