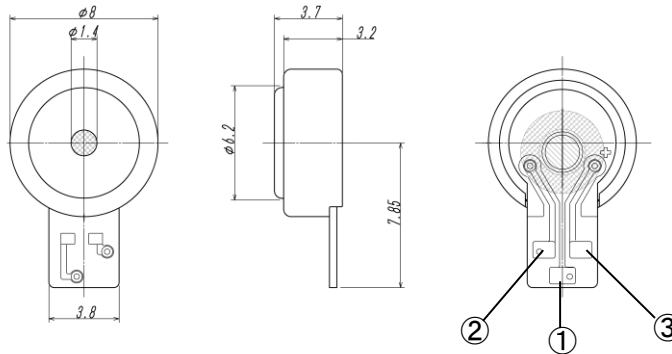
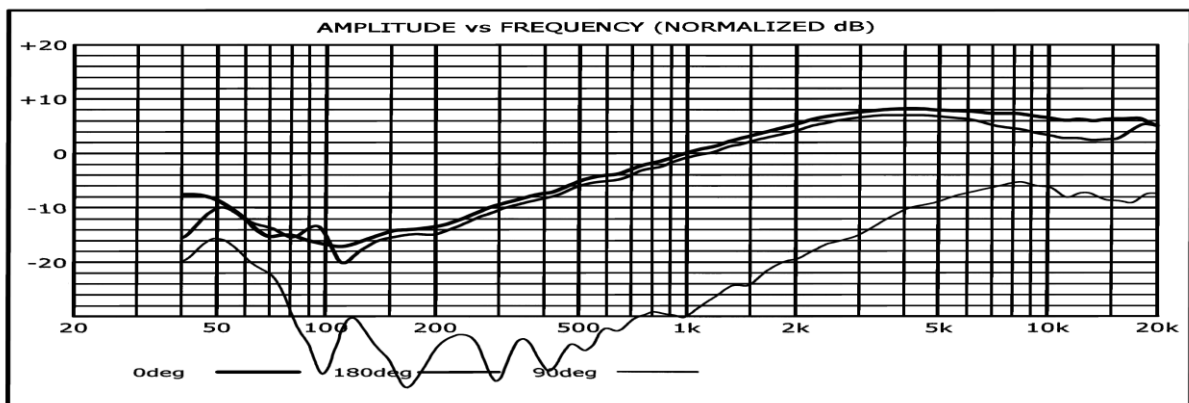


1. Outer Appearance and Dimensions (unit : mm)

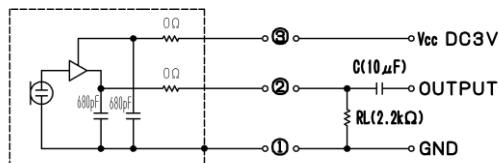


2. Electrical Specifications

- 2-1 Type Back Electret Condenser
- 2-2 Sensitivity  $-53\text{dB} \pm 3\text{dB}$  ( $0\text{dB} = 1\text{V} / 1\text{Pa}$ )
- 2-3 Frequency Range 200Hz ~ 10kHz
- 2-4 Impedance  $1\text{k}\Omega$  typical at 1kHz ( $R_L = 2.2\text{k}\Omega$ )
- 2-5 Polar Pattern Bi-Directional
- 2-6 Power Requirements 1. 3V ~ 12V Operating Voltage Reference 3V
- 2-7 Current Consumption Less than  $300\mu\text{A}$
- 2-8 Maximum Input S. P. L 113dB S.P.L.( $R_L = 2.2\text{k}\Omega$  at 1kHz 1% T. H. D)
- 2-9 Signal/Noise Ratio 60dB typical (at 1kHz/Pa A-Weighted)
- 2-10 Polarity Positive acoustic Pressure on the diaphragm  
Generates a positive phase voltage on OUTPUT
- 2-11 Frequency Response



Measurement Circuit



RevNo.	Date	Revision note	<i>Four-Leaf</i>		